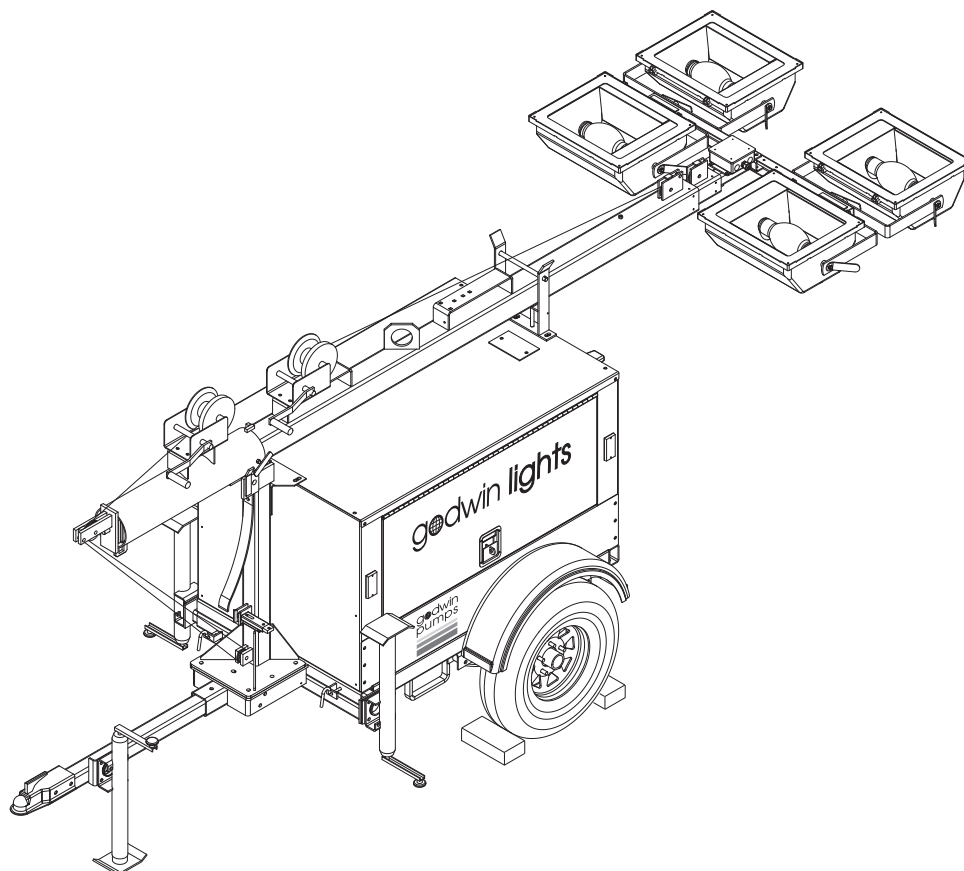


godwin
pumps®



LIGHT TOWER
GLT416 • GLT418



PARTS MANUAL

INTRODUCTION

Before servicing this machine, make sure the engine start switch is turned to off "O", the circuit breakers are open (off, "O"), the emergency stop switch is closed (pushed in), and the negative (-) terminal on battery is disconnected. Attach a "DO NOT START" sign to the control panel. This will notify everyone that the unit is being serviced and will reduce the chance of someone inadvertently trying to start the unit. If the unit is connected to a remote start or transfer switch, make sure the remote switch is also off and tagged.

▲ WARNING

Before operating or servicing this equipment, read and understand the Operating Manual which was included with the unit when shipped from the factory. Failure to do so increases the risk of injury to yourself or others.

**GODWIN PUMPS
One Floodgate Road
Bridgeport, NJ 08014**

**Phone: 856-467-3636
FAX: 856-467-4841**

www.godwinpumps.com

Engine Make: _____

Engine Serial Number: _____

Engine Model Number: _____

Generator Make: _____

Generator Model Number: _____

Generator Serial Number: _____

Unit Model Number: _____

Unit Serial Number: _____

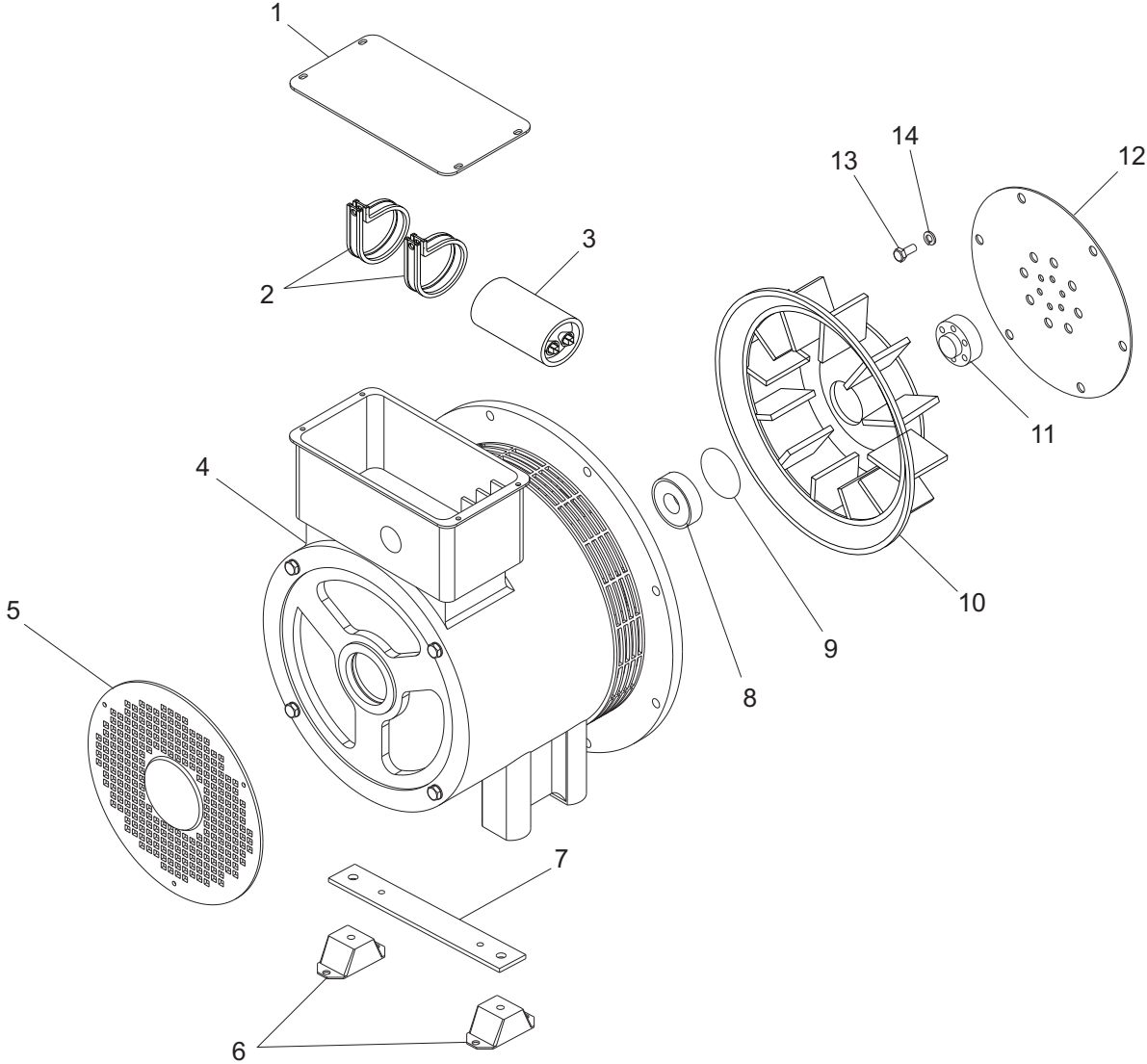
▲ WARNING

**CALIFORNIA PROPOSITION 65 WARNING:
Diesel engine exhaust and some of its constituents are known to the state of California to cause cancer, birth defects and other reproductive harm.**

TABLE OF CONTENTS

	Page
INTRODUCTION	2
TABLE OF CONTENTS	3
6 KW GENERATOR ASSEMBLY	4 - 5
8 KW GENERATOR ASSEMBLY	6 - 7
MANUAL WINCH MAST ASSEMBLY	8 - 9
ELECTRIC WINCH MAST ASSEMBLY	10 - 11
ENCLOSURE ASSEMBLY	12 - 13
FRAME ASSEMBLY	14 - 15
COMPONENTS TO FRAME ASSEMBLY	16 - 17
MAST POST ASSEMBLY	18 - 19
MAST JUNCTION BOX ASSEMBLY - QUICK DISCONNECT LIGHTS	20
MAST JUNCTION BOX ASSEMBLY - HARD WIRED LIGHTS	21
MITSUBISHI ENGINE ASSEMBLY	22 - 23
KUBOTA ENGINE ASSEMBLY	24 - 25
LIGHT ASSEMBLY	26 - 27
CONTROL BOX ASSEMBLY	28
CONTROL PANEL ASSEMBLY - GLT416	29
CONTROL PANEL ASSEMBLY - GLT418	30
WIRING HARNESS ASSEMBLY	31

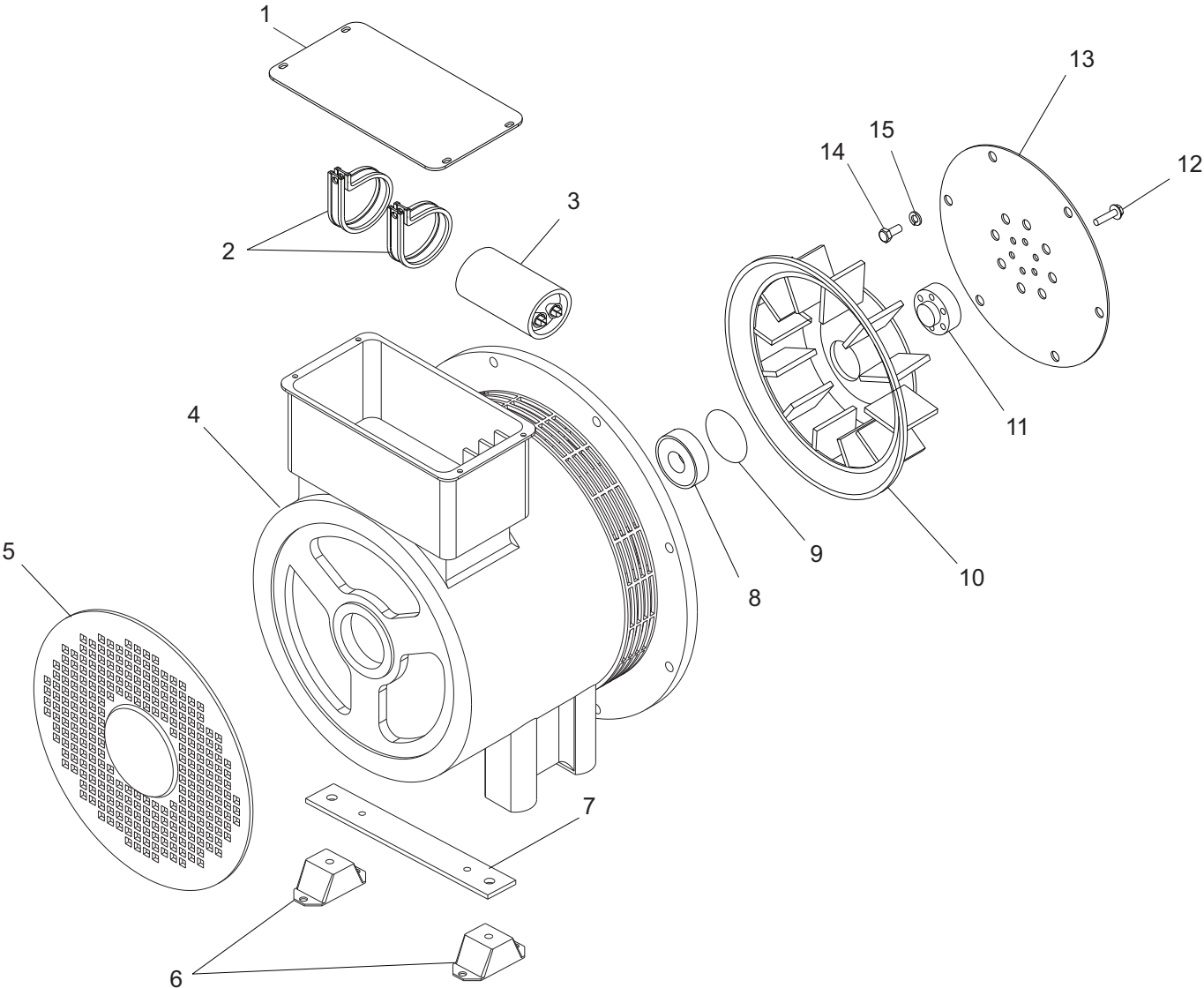
6 KW GENERATOR ASSEMBLY



ITEM	PART	QTY	DESCRIPTION	NOTES
1	HUSH-12736	1	Marathon gen box cover, 6KW-20KW	
2	HUSH-16395	2	Capacitor clamp	
3	HUSH-12159	1	Capacitor, 25 μ F Marathon 6KW	
	HUSH-15695	1	Capacitor, 45 μ F Marathon	
4	HUSH-16556	1	Generator, 6 kW 60Hz capacitor	
5	HUSH-12327	1	Marathon 6KW pancake case cover	
6	HUSH-15241	2	Compression mount, engine/generator	
7	HUSH-15045	1	Generator mounting bar	
8	HUSH-12328	1	Marathon 6KW pancake bearing	
9	HUSH-12329	1	Marathon 6KW pancake bearing seal	
10	HUSH-12527	1	Fan, Marathon 6KW gen (model 201)	
	HUSH-16421	1	Generator fan blade 6KW (model 332)	
11	HUSH-11339	1	Generator drive plate spacer	
12	HUSH-16123	1	Plate, drive - SAE 6.5	
13	HUSH-60410	6	Screw, M8x1.25x16 hx hd	
14	HUSH-60029	6	Washer, split lock M8	

Note: Engine and generator parts used in all GODWING PUMPS OF AMERICA equipment carry the Original Equipment Manufacturer (OEM) warranty unless otherwise stated. OEM warranty parts must be purchased through an OEM dealer. Please contact GODWING PUMPS OF AMERICA with questions.

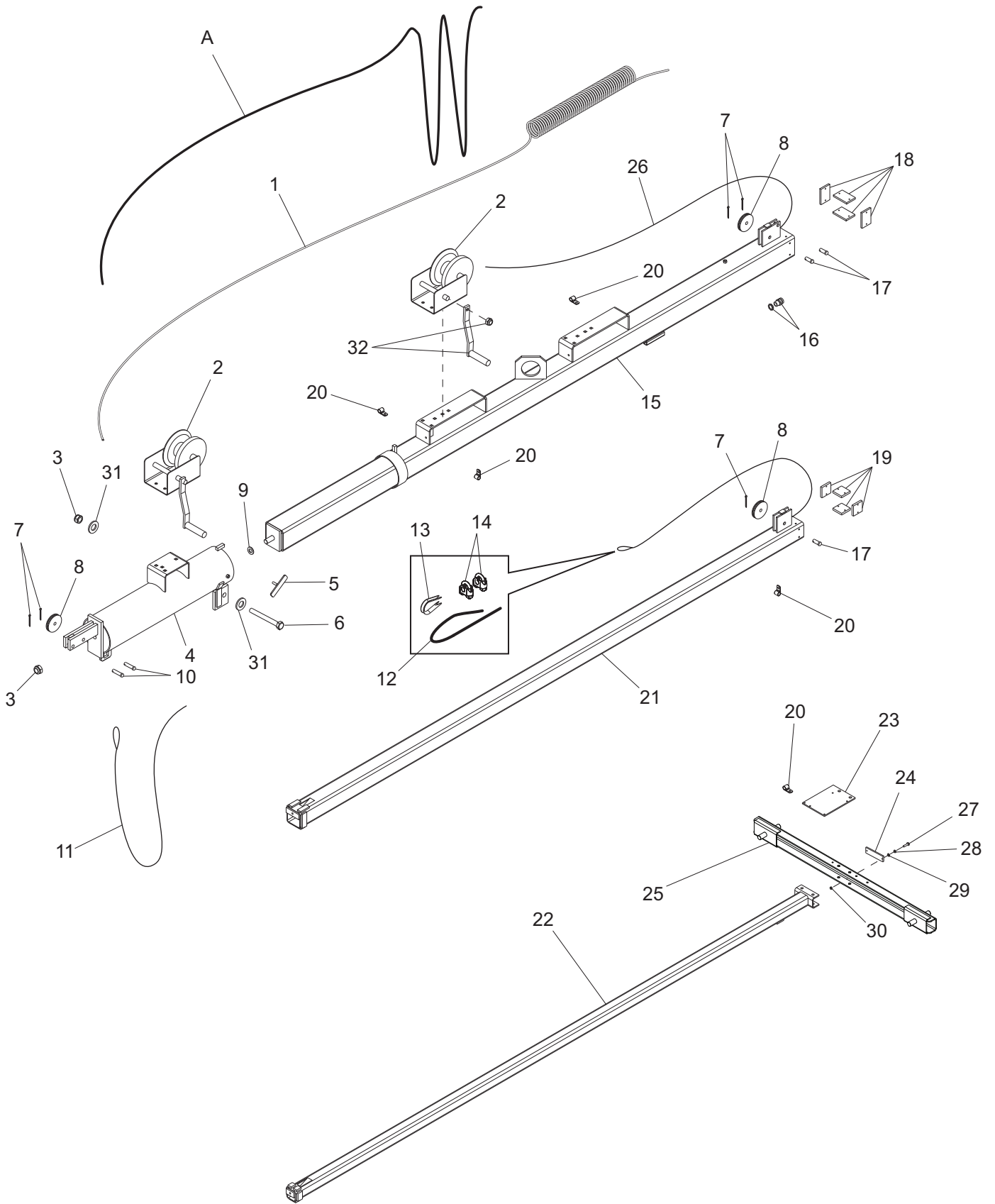
8 KW GENERATOR ASSEMBLY



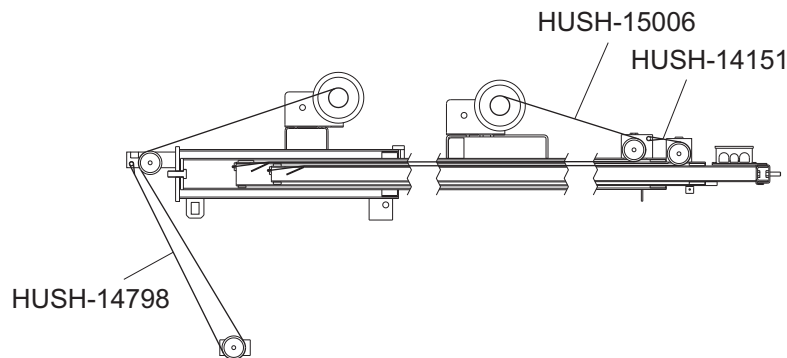
ITEM	PART	QTY	DESCRIPTION	NOTES
1	HUSH-12736	1	Cover, generator box	
2	HUSH-16395	2	Capacitor clamp	
3	HUSH-15695	1	Capacitor, generator 45 μ F	
	HUSH-15798	-	Capacitor, 50 μ F, 440VAC, 50/60 Hz	
	HUSH-10733	-	Capacitor, 25 μ F 550V	
4	HUSH-10486	1	Generator, 8kw - cap reg	
5	HUSH-11338	1	Generator end cover	
6	HUSH-15241	2	Compression mount, engine/gen	
7	HUSH-15045	1	Generator mounting bar	
8	HUSH-16134	1	Bearing, 6 kW	
9	HUSH-11337	1	Generator O-ring	
10	HUSH-16421	1	Generator fan blade	
11	HUSH-11339	1	Generator drive plate spacer	
12	HUSH-11336	6	Generator screw - .375-24x .875	
13	HUSH-16123	1	Plate, drive	
14	HUSH-60410	6	Screw, M8x1.25x16 hx hd	
15	HUSH-60029	6	Washer, split lock M8	
--	HUSH-15493	2	Diode, rotor	Not shown
--	HUSH-15492	1	Suppressor	Not shown

Note: Engine and generator parts used in all GODWING PUMPS OF AMERICA equipment carry the Original Equipment Manufacturer (OEM) warranty unless otherwise stated. OEM warranty parts must be purchased through an OEM dealer. Please contact GODWING PUMPS OF AMERICA with questions.

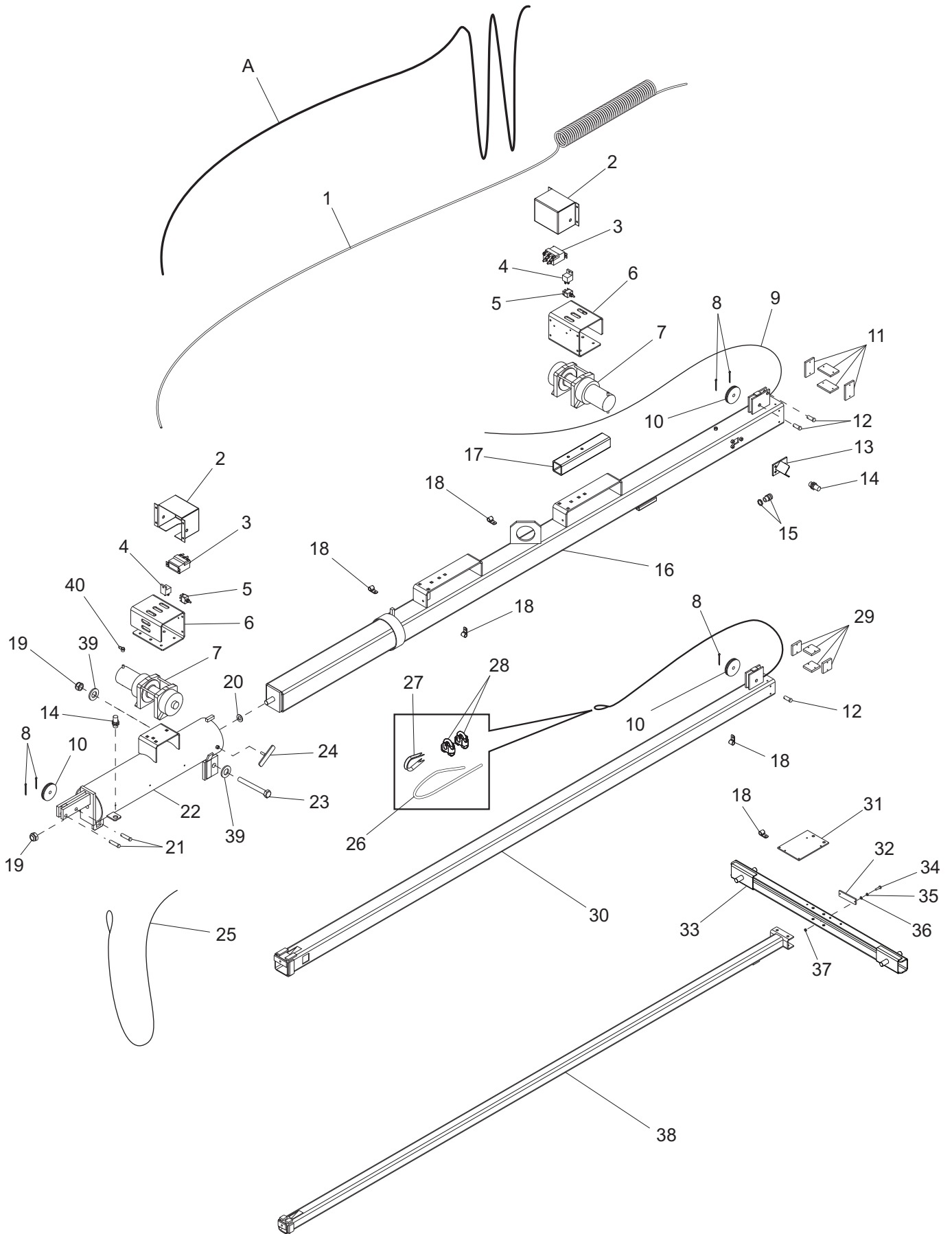
MANUAL WINCH MAST ASSEMBLY



ITEM	PART	QTY	DESCRIPTION	NOTES
1	HUSH-11954	1	Coil cord, mast	
2	HUSH-16600	2	Winch, manual	
3	HUSH-60584	2	Nut, .750-10 nylock G5 yellow zinc	
4	HUSH-11902B	1	Weldment, mast tube	
5	HUSH-11649Z	1	Weldment, t-bolt	
6	HUSH-15292	1	Screw, .750-10x6.500 hx hd SS	
7	HUSH-15380	4	Pin, cotter -.125x1.250	
8	HUSH-14262	2	Sheave, 3 in.	
9	HUSH-60247	1	Washer, flat .750	
10	HUSH-14234	2	Pin, clevis .500 x 2.00	
11	HUSH-14798	1	Cable, .188 in. x 16 ft. steel w/teardrop	
12	HUSH-14151	1	Cable, .188 in. x 11 ft. steel w/swedge	
13	HUSH-15003	1	Thimble, cable - .188	
14	HUSH-15002	2	Clip, wire rope .188	
15	HUSH-11933B	1	Weldment, mast - 4.00	
16	HUSH-14439	1	Strain relief - .50 NPT, .50 cord	
17	HUSH-15015	3	Pin, clevis .500 x 1.25	
18	HUSH-15014	4	Shim, 2 x 3 x .281 GSM	
19	HUSH-15013	4	Shim, 2 x 2 x .344 GSM	
20	HUSH-16143	5	Clamp, tubing .500	
21	HUSH-11934B	1	Weldment, mast - 3.00	
22	HUSH-16257B	1	Weldment, mast - 2.00	
23	HUSH-12095B	1	Bracket, junction box	
24	HUSH-15829	1	Reflector, red	
25	HUSH-12751B	1	Weldment, mast crossbar	
26	HUSH-15006	1	Cable - .188 in. x 27 ft. steel w/swedge	
27	HUSH-60397	1	Screw, 10-32X1.000 pan hd phil	
28	HUSH-60252	2	Washer, split lock #10	
29	HUSH-60237	2	Washer, flat #10	
30	HUSH-14231	2	Nut, 10-32 hx	
31	HUSH-60744	2	Washer, flat .750ID/1.25OD/.06th delrin	
32	HUSH-15623	2	Winch handle, 9.00 in long	
A	HUSH-15612	1	Cable, 16-7 cold mast drape	Option

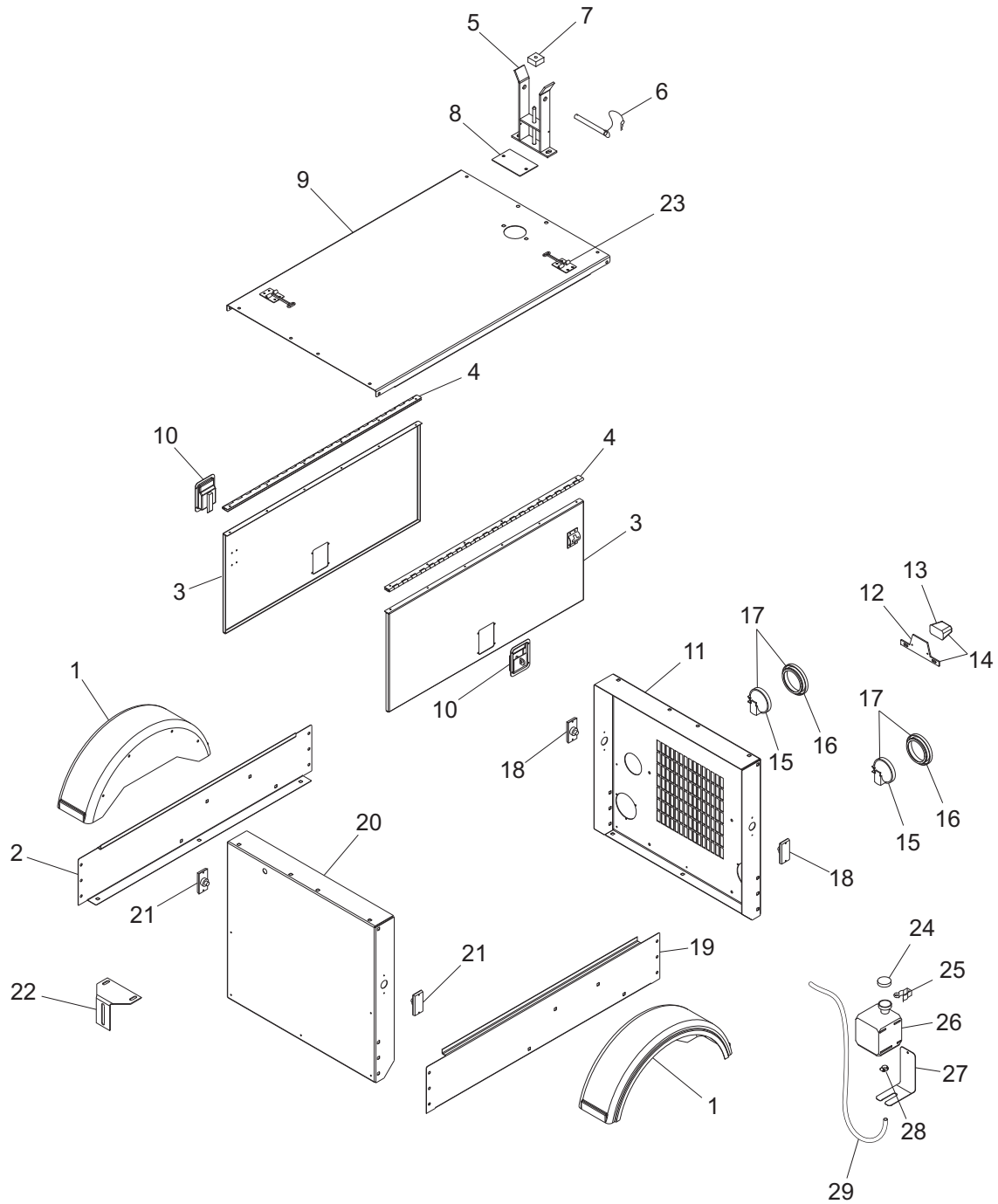


ELECTRIC WINCH MAST ASSEMBLY



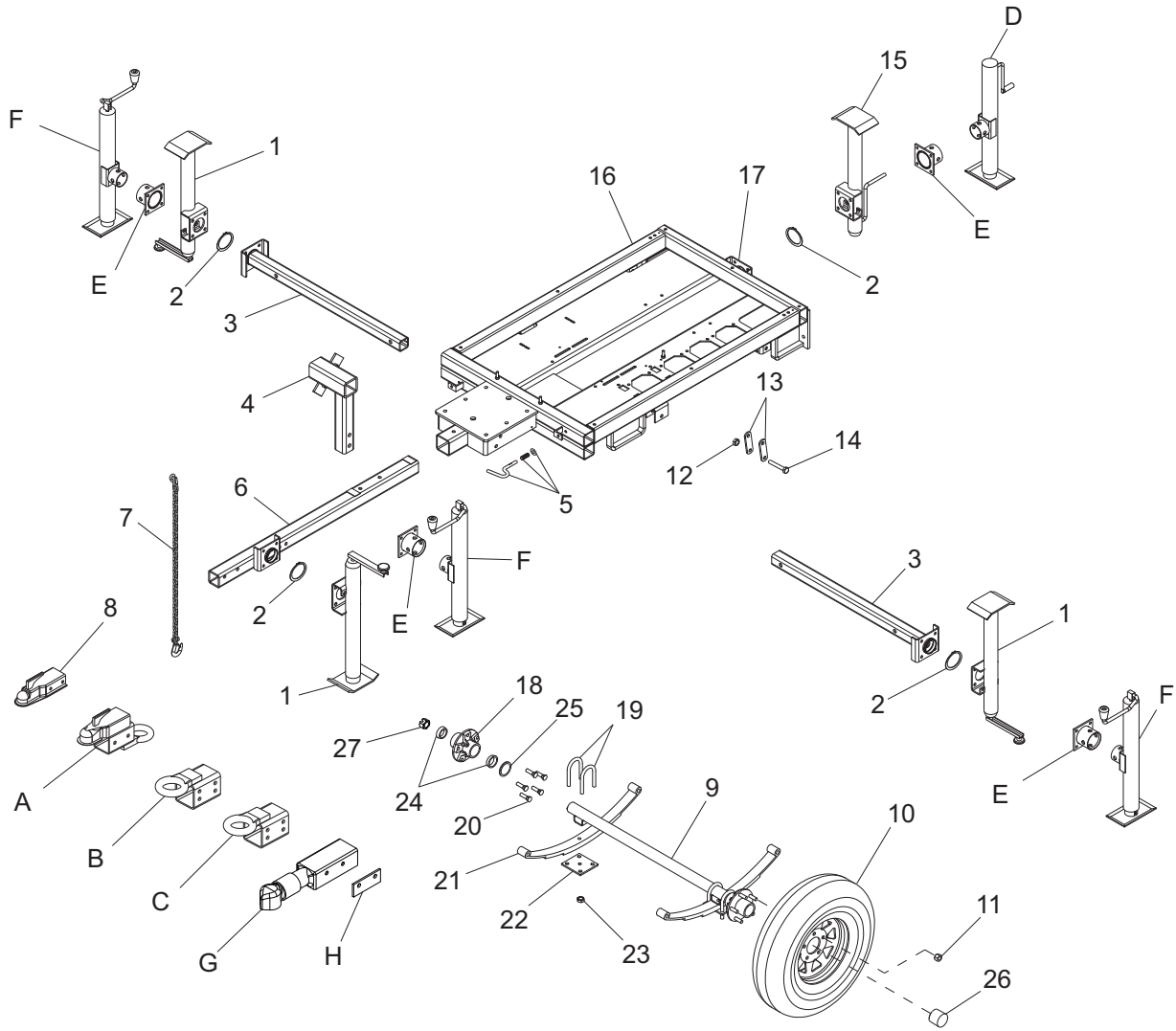
ITEM	PART	QTY	DESCRIPTION	NOTES
1	HUSH-11954	1	Coil cord	
2	HUSH-12875B	2	Cover, winch contactor	
3	HUSH-11293	2	Contactora, electric winch - warn	
4	HUSH-65049	2	Relay, 12V 30/40A N.O. w/diode	
5	HUSH-65707	2	Switch, toggle - spring weatherproof	
6	HUSH-12872B	2	Bracket, winch mounting	
7	HUSH-12874	2	Winch, electric - 770 lb. hoist	
8	HUSH-15380	5	Pin, cotter - .125x1.250	
9	HUSH-15006	1	Cable, .188 in. x 27 ft. w/ball swedge	
10	HUSH-14262	3	Sheave, 3 in.	
11	HUSH-15014	4	Shim, 2 x 3 x .281 GSM	
12	HUSH-15015	3	Pin, clevis .500 x 1.25	
13	HUSH-13796B	1	Weldment, prox sensor brkt	
14	HUSH-65511	2	Sensor, proximity	
15	HUSH-14439	1	Strain relief- .50 NPT, .50 cord	
16	HUSH-12085B	1	Weldment, 4.00 mast - Electric Winch	
17	HUSH-11967B	1	Channel, electric winch mount	
18	HUSH-16143	3	Clamp, tubing .500	
19	HUSH-60584	2	Nut, .750-10 nylock G5 yellow zinc	
20	HUSH-60247	1	Washer, flat .750	
21	HUSH-14234	2	Pin, clevis .500 x 2.00	
22	HUSH-12876B	1	Weldment, mast tube - Electric Winch	
23	HUSH-15292	1	Screw, 750-10 x 6.50 hx hd SS	
24	HUSH-11649Z	1	Weldment, t-bolt	
25	HUSH-14798	1	Cable - .188 in. x 16 ft. steel w/teardrop	
26	HUSH-14151	1	Cable - .188 in. x 11 ft. steel w/swedge	
27	HUSH-15003	1	Thimble, cable - .188	
28	HUSH-15002	2	Clip, wire rope - .188 single saddle	
29	HUSH-15013	4	Shim, 2 x 2 x .344 GSM	
30	HUSH-12084B	1	Weldment, 3.00 mast	
31	HUSH-12095	1	Bracket, junction box	
32	HUSH-15829	1	Reflector, red	
33	HUSH-12751B	1	Weldment, mast crossbar	
34	HUSH-60397	2	Screw, 10-32X1.000 pan hd phil	
35	HUSH-60252	2	Washer, split lock #10	
36	HUSH-60237	2	Washer, flat #10	
37	HUSH-14231	2	Nut, 10-32 hx	
38	HUSH-16257B	1	Weldment, mast - 2"	
39	HUSH-60744	2	Washer, flat .750ID/1.25OD/.06th delrin	
40	HUSH-12922	4	Boot, battery cable - red	
A	HUSH-15612	1	Cable, 16-7 cold mast drape	Option

ENCLOSURE ASSEMBLY



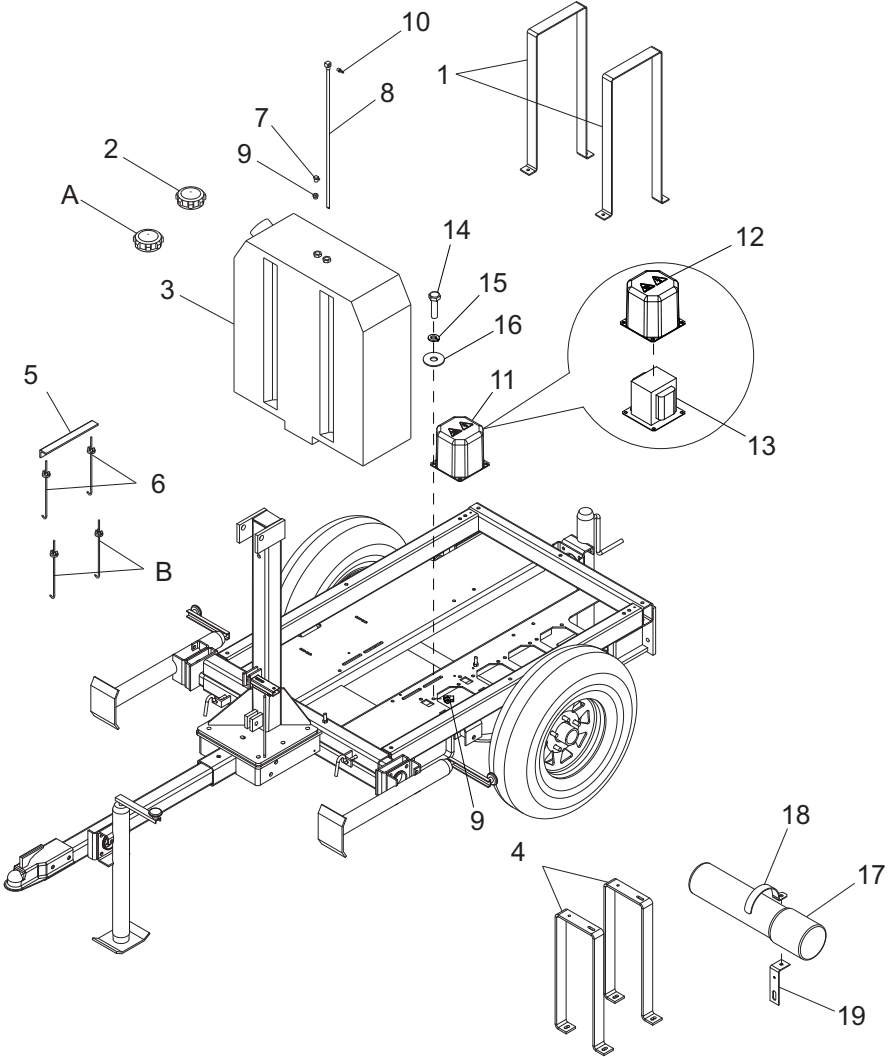
ITEM	PART	QTY	DESCRIPTION	NOTES
1	HUSH-16560	2	Fender, plastic -13" tire	
2	HUSH-12014GP	1	Panel, side (R)	
3	HUSH-11066GP	2	Panel, door	
4	HUSH-11095	2	Hinge, continuous - 43.00	
5	HUSH-12344ZN	1	Weldment, cradle - common mast	
6	HUSH-16099	1	Assembly, mast cradle pin	
7	HUSH-11935	1	Pad, rubber - 2.00 X 2.00 X 1.00	
8	HUSH-11096GP	1	Panel, radiator access	
9	HUSH-11062GP	1	Panel, top	
10	HUSH-15123	2	Latch, paddle	
11	HUSH-11060GP	1	Panel, rear	
12	HUSH-10224	1	Bracket, license plate	
13	HUSH-10225	1	Light, license bracket	
14	HUSH-10223	1	Assembly, license plate light/bracket	
15	HUSH-10220	2	Light, rear tail/turn no grommet	
16	HUSH-10221	2	Grommet, rear light, rubber 4.5"	
17	HUSH-10219	2	Assembly, rear tail/turn light	
18	HUSH-65406	2	Light, clearance maker - red	
19	HUSH-12015GP	1	Panel, side (L)	
20	HUSH-11077GP	1	Panel, front	
21	HUSH-65407	2	Light, clearance marker amber	
22	HUSH-14459B	1	Bracket, door adjusting	
23	HUSH-12605	2	Door latch SS - T style	
24	HUSH-19714	1	Cap, overflow bottle	
25	HUSH-19726	1	Clamp, overflow bottle	
26	HUSH-20287	1	Jug, overflow 2 qt (.5 gal)	
27	HUSH-22419B	1	Bracket, support overflow jug .5 gal	
28	HUSH-60777	1	Clamp, hose - .312 fuel hose crimp style	
29	HUSH-19220	1	Hose, overflow	
--	HUSH-14410	1	Assembly, overflow jug 1.5 qt.	Items 24-29

FRAME ASSEMBLY



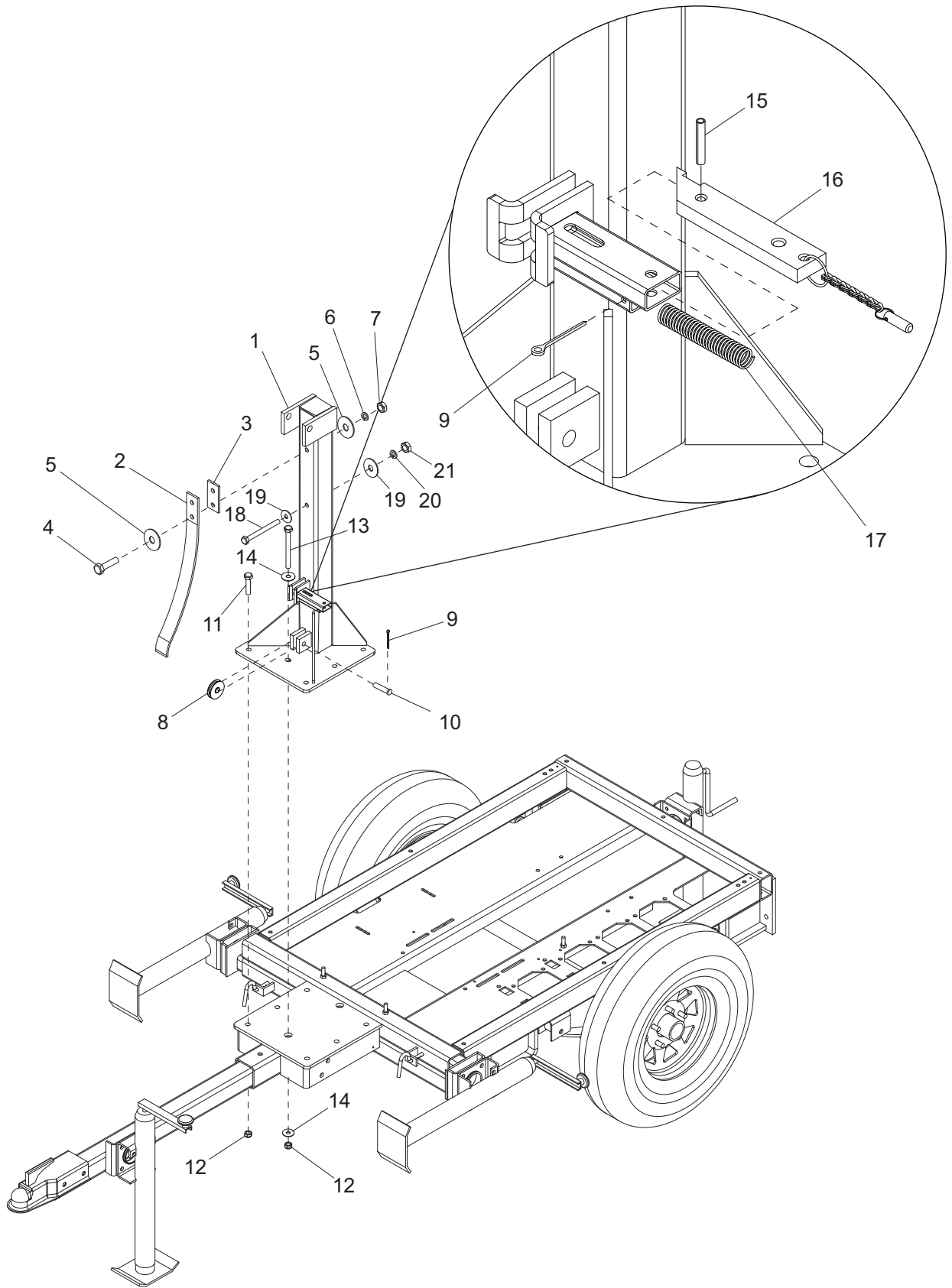
ITEM	PART	QTY	DESCRIPTION	NOTES
1	HUSH-11682	3	Jack, top wind - 2000 lb.	
2	HUSH-14326	4	Ring, retaining	
3	HUSH-12431Z	2	Weldment, outrigger	
4	HUSH-12235B	1	Weldment, spare tire holder	
5	HUSH-14324	2	Kit, plunger	
6	HUSH-12420B	1	Weldment, removable tongue	
7	HUSH-23367	2	Chain, safety - 7,800 lbs. rated	
8	HUSH-16830	1	Coupler, 2.00 ball/2.50 channel	
9	HUSH-11100	1	Axle, 2200 lb.	
10	HUSH-15976	2	Wheel, 13"	
11	HUSH-60096	10	Nut, .500-20 wheel lug	
12	HUSH-60504	6	Nut, .562-18 hx shackle lock	
13	HUSH-19637	4	Plate, shackle bracket	
14	HUSH-60503	6	Screw, .562-18 hx shackle	
15	HUSH-11681	1	Jack, side wind - 2000 lb.	
16	HUSH-13819B	1	Weldment, LT chassis	
17	HUSH-11221	1	Bracket, jack mounting - 1.25 deep	
18	HUSH-11206	2	Axis Axle hub w/studs and outer races	
19	HUSH-11201	4	Axis Axle U-bolt 2200 lb.	
20	HUSH-11207	10	Axis Axle wheel stud .500-20	
21	HUSH-16679	2	Spring - 25 in. 2200 lb.	
22	HUSH-11202	2	Axis Axle tie-plate 2200 lb.	
23	HUSH-11203	8	Axis Axle nut (U bolt) 2200 lb.	
24	HUSH-11511	4	Axis Axle roller bearing	
25	HUSH-13000	2	Axis axle seal - 2200 lb.	
26	HUSH-12460	2	Axis axle, wheel bearing cap	
27	HUSH-12308	2	Spindle nut	
A	HUSH-16741B	1	Weldment, combo hitch - 2.50 tongue	Option
B	HUSH-16835B	1	Weldment, lunette ring - 3.00 ID	Option
C	HUSH-16999B	1	Weldment, lunette ring - 2.50 ID	Option
D	HUSH-13050	1	Jack assembly, 3000# side wind	Option
E	HUSH-11965Z	4	Weldment, jack adapter	Option
F	HUSH-13051	3	Jack assembly, 3000# top wind	Option
G	HUSH-13003B	1	Coupler, 2.00 ball/3/00 channel	Option: Bulldog hitch
H	HUSH-12155B	1	Spacer, coupler - black	Option: Bulldog hitch

COMPONENTS TO FRAME ASSEMBLY



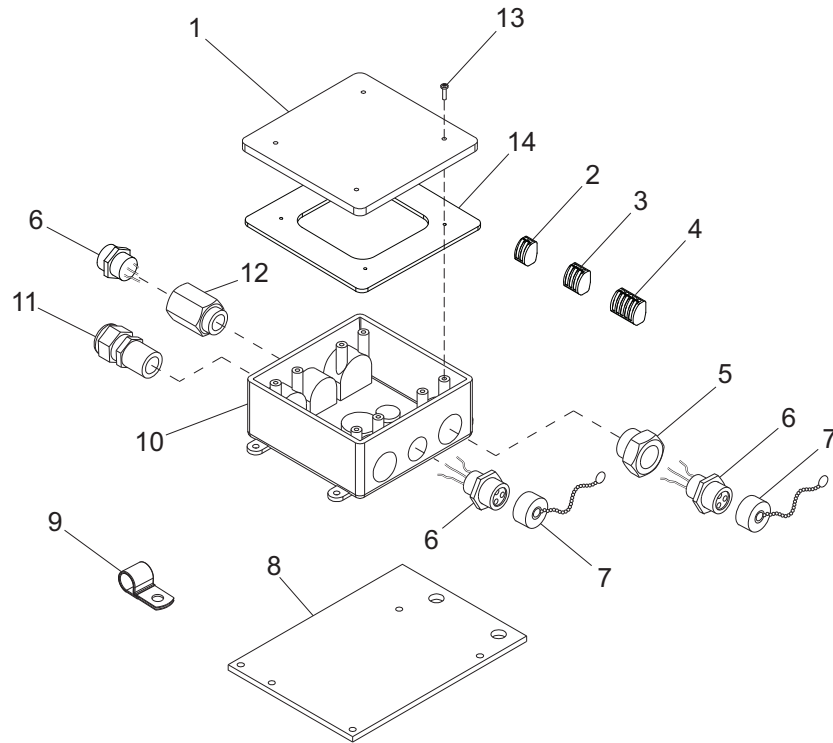
ITEM	PART	QTY	DESCRIPTION	NOTES
1	HUSH-11065B	2	Bracket, fuel tank support	
2	HUSH-12080	1	Cap, fuel tank vented - 3.5"	
3	HUSH-11054	1	Tank, fuel 30 gal.	
4	HUSH-10692B	2	Bracket, control box mounting	
5	HUSH-12924B	1	Angle, battery hold-down	
6	HUSH-14146	2	Bolt, J - .250-20 x 10.00	
7	HUSH-16271	1	Fitting, .250NPT X .188 hose barb	
8	HUSH-11083	1	Fuel pick-up tube - 30.75 in.	
9	HUSH-16270	1	Fitting, .375MNPT to .250 FNPT straight	
10	HUSH-15142	1	Fitting, strt, .250NPT X .312 hose barb	
11	HUSH-13301	4	Assy, transformer-can and base	
12	HUSH-13300	4	Can, transformer - ballast box	
13	HUSH-13299	4	Transf. & base brkt w/ str relief	
14	HUSH-60028	16	Screw, .312-18 x 1.00 std hex	
15	HUSH-60271	16	Washer, .312-18 split lock	
16	HUSH-60243	16	Washer, .312-18 flat	
17	HUSH-11121	1	Tube, black manual holder 14"	
18	HUSH-10241	1	Clamp, 2.5" - manual holder	
19	HUSH-11131B	1	Bracket, manual holder	Attached to back of control box
A	HUSH-12137	1	Cap, fuel tank-vented 3.5" grn w/lanyard	Option
B	HUSH-60984	2	Bolt, J- .250-20 X 7.00	Option: gel cell battery

MAST POST ASSEMBLY



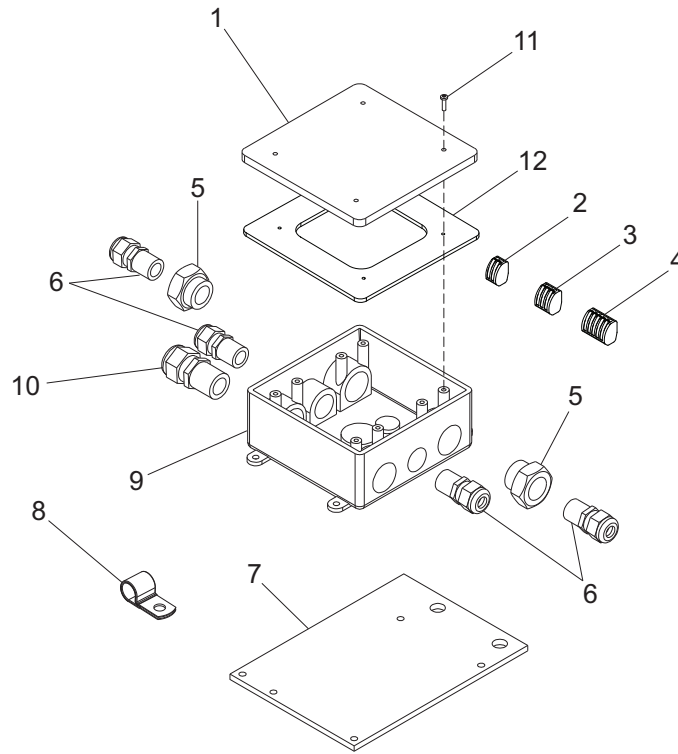
ITEM	PART	QTY	DESCRIPTION	NOTES
1	HUSH-11057B	1	Weldment, mast post	
2	HUSH-14845B	1	Spring, kickback - 50lb, black	
3	HUSH-11554Z	1	Spacer plate - kick-back spring	
4	HUSH-60732	2	Screw, .500-13x5.500 std hex 18-8 ss	
5	HUSH-60699	4	Washer, .500 flat 1.070/.080 18-8 ss	
6	HUSH-60702	2	Washer, .500 split lock 18-8 ss	
7	HUSH-14229	2	Nut, .500-13 hex zc	
8	HUSH-14261	1	Sheave - 2 in.	
9	HUSH-15380	2	Pin, cotter - .125x1.250	
10	HUSH-15015	1	Pin, clevis- .500 dia x 1.25	
11	HUSH-60683	6	Screw, .500-13x1.500 std hex 18-8 ss	
12	HUSH-60307	8	Nut, .500-13 nylk G5	
13	HUSH-60659	2	Screw, .500-13x5.000 std hex G5	
14	HUSH-60416	4	Washer, .500 flat 1.375/.090	
15	HUSH-15165	1	Pin, roll - .250x1.250 plain	
16	HUSH-11215	1	Assy, latch bar	
17	HUSH-14275	1	Spring, compression - .60.x2.75x.054	

MAST JUNCTION BOX ASSEMBLY - QUICK DISCONNECT LIGHTS



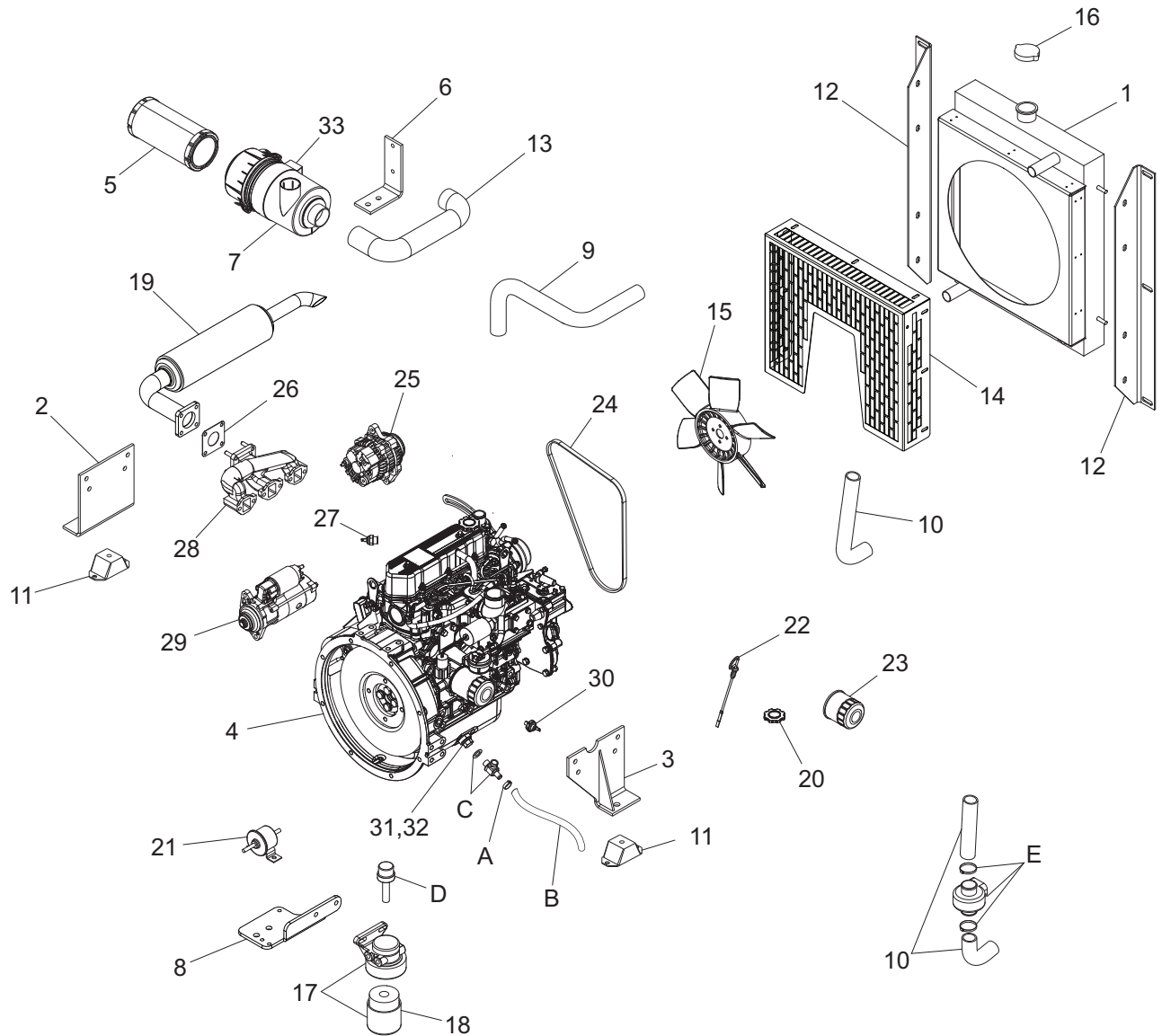
ITEM	PART	QTY	DESCRIPTION	NOTES
1	HUSH-12109	1	Box cover, 2-gang plastic	
2	HUSH-66100	4	Connector, 2 pos. Wago	
3	HUSH-66101	2	Connector, 3 pos. Wago	
4	HUSH-66102	1	Connector, 5 pos. Wago	
5	HUSH-60755	2	Fitting, .750MNPT x .500FNPT nylon	
6	HUSH-15403	4	Connector, quick disconnect (female)	
7	HUSH-15404	4	Cap, receptacle w/chain	
8	HUSH-12095B	1	Bracket, junction box	
9	HUSH-16143	1	Clamp, tubing .500	
10	HUSH-12094	1	Box, junction	
11	HUSH-14656	1	Strain relief, .750NPT water tight	
12	HUSH-12713	1	Fitting, adapter-1/2"-14 M to 1/2"-14 F	
13	HUSH-60424	4	Screw, 6-32x.750 pan phil G2 ZC	
14	HUSH-13749	1	Gasket, junction box - HFI 281000	
-	HUSH-11957	-	Assembly, mast junction box	

MAST JUNCTION BOX ASSEMBLY - HARD WIRED LIGHTS



ITEM	PART	QTY	DESCRIPTION	NOTES
1	HUSH-12109	1	Box cover, 2-gang plastic	
2	HUSH-66100	4	Connector, 2 pos. Wago	
3	HUSH-66101	2	Connector, 3 pos. Wago	
4	HUSH-66102	1	Connector, 5 pos. Wago	
5	HUSH-60755	2	Fitting, .750MNPT x .500FNPT nylon	
6	HUSH-15864	4	Strain relief, .500NPT water tight	
7	HUSH-12095B	1	Bracket, junction box	
8	HUSH-16143	1	Clamp, tubing .500	
9	HUSH-12094	1	Box, junction	
10	HUSH-14656	1	Strain relief, .750NPT water tight	
11	HUSH-60424	4	Screw, 6-32X.750 pan phil G2 ZC	
12	HUSH-13749	1	Gasket, junction box - HFI 281000	
-	HUSH-11789	-	Assembly, mast junction box	

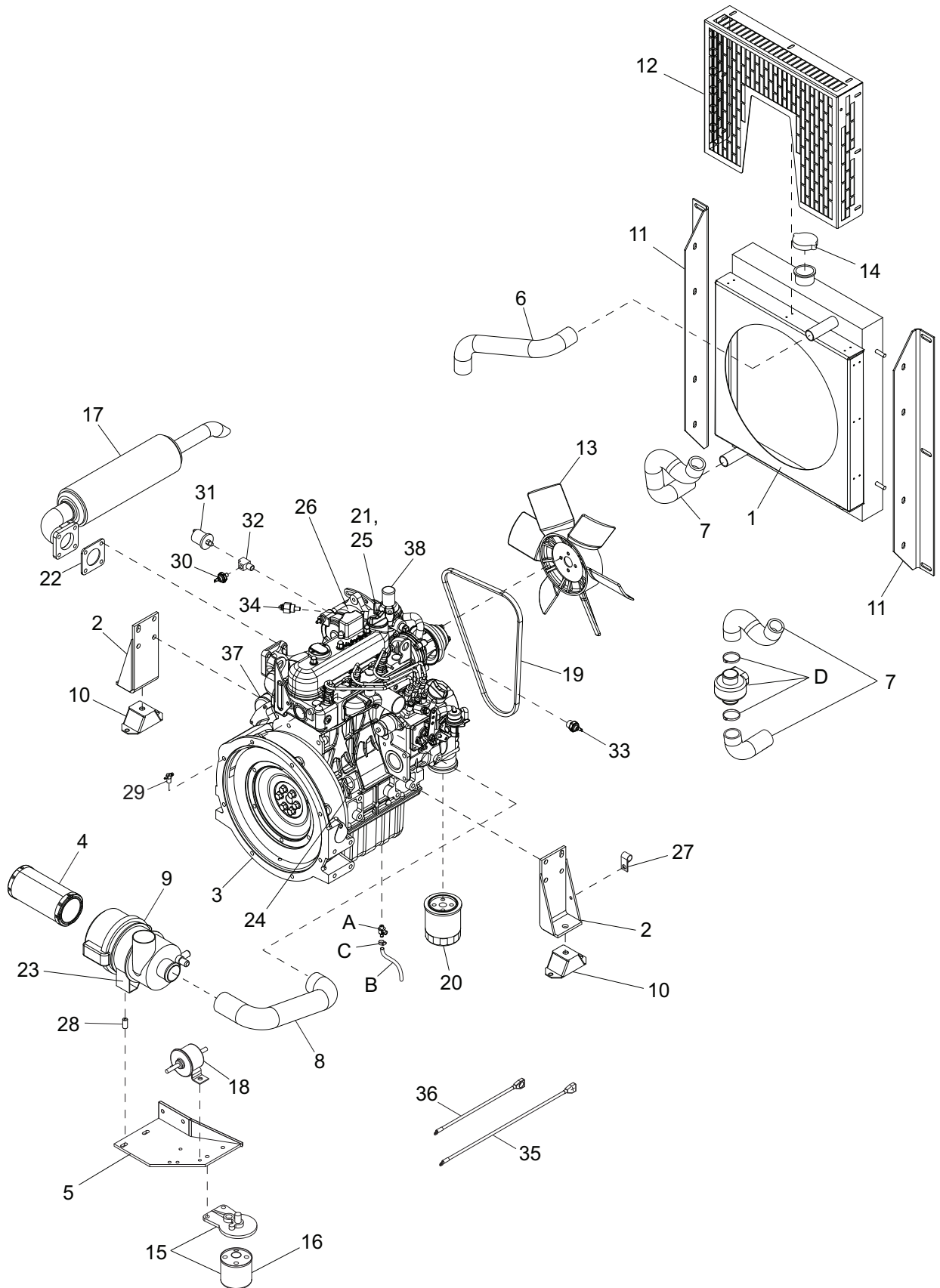
MITSUBISHI ENGINE ASSEMBLY



Note: Engine and generator parts used in all GODWING PUMPS OF AMERICA equipment carry the Original Equipment Manufacturer (OEM) warranty unless otherwise stated. OEM warranty parts must be purchased through an OEM dealer. Please contact GODWING PUMPS OF AMERICA with questions.

ITEM	PART	QTY	DESCRIPTION	NOTES
1	HUSH-13924	1	Radiator w/fan guard - welded	
2	HUSH-16554B	1	Weldment, engine mount - LH	
3	HUSH-16553B	1	Weldment, engine mount - RH	
4	HUSH-13046	1	Engine, Mitsubishi - L3E int. Tier IV	
5	HUSH-16444	1	Element, air filter	
6	HUSH-16551B	1	Bracket, air cleaner	
7	HUSH-16443	1	Filter, air with bracket	
8	HUSH-12838B	1	Bracket, fuel filter/pump	
9	HUSH-16687	1	Hose, radiator upper	
10	HUSH-16688	1	Hose, radiator lower	
11	HUSH-15241	4	Mount, compression	
12	HUSH-11135B	2	Bracket, radiator	
13	HUSH-16589	1	Hose, air cleaner	
14	HUSH-11413	1	Guard, fan	
15	HUSH-16742	1	Fan, engine	
16	HUSH-19219	1	Cap, pressure radiator	
17	HUSH-17641	1	Fuel filter head & element (new)	Start SN: 1003181
	HUSH-16685	1	Fuel filter head & element	End SN: 1003180
18	HUSH-17647	1	Element, fuel filter (new)	Start SN: 1003181
	HUSH-16686	1	Element, fuel filter	End SN: 1003180
19	HUSH-13710	1	Muffler, engine	
20	HUSH-11147	1	Cap, oil filler	
21	HUSH-13278	1	Fuel pump, electric	
22	HUSH-11148	1	Dipstick, engine oil	
23	HUSH-16691	1	Filter, oil	
24	HUSH-16692	1	V-belt, alternator	
25	HUSH-16743	1	Alternator, Mitsubishi	
26	HUSH-11042	1	Gasket, exhaust manifold	
27	HUSH-16678	1	Switch, coolant temperature	
28	HUSH-12529	1	Manifold, exhaust	
29	HUSH-16833	1	Starter assy, engine	
30	HUSH-16677	1	Switch, oil pressure	
31	HUSH-12888	1	Plug, oil drain	
32	HUSH-12889	1	Gasket, oil drain	
33	HUSH-16445	1	Bracket, air cleaner housing	
--	HUSH-16683	1	Solenoid, fuel shut-down	Not shown
--	HUSH-16693	3	Glow plug, engine	Not shown
--	HUSH-15074	1	Cable, battery red 38"	Not shown
--	HUSH-12568	1	Cable, battery black 27"	Not shown
--	HUSH-16744	1	Water pump, Mitsubishi	Not shown
--	HUSH-12213	1	Mitsubishi, gasket, water pump	Not shown
--	HUSH-16745	1	Thermostat, Mitsubishi	Not shown
--	HUSH-12214	1	Gasket, thermostat	Not shown
--	HUSH-12959	1	Mitsubishi, gasket, intake manifold L3E	Not shown
--	HUSH-12214	1	Mitsubishi, gasket, thermostat	Not shown
--	HUSH-16874	1	Assy, engine harness	Not shown
--	HUSH-11366	1	Solenoid, starter Mitsubishi	Not shown
--	HUSH-11367	1	Manifold stud	Not shown
A	HUSH-60777	1	Clamp, hose - .312 fuel hose crimp style	Option
B	HUSH-12227	1	Hose, oil drain .375 X 20, 30R7	Option
C	HUSH-60766	1	Valve, drain 18MM-1.5 w/nipple	Option
D	HUSH-13876	1	Kit, heater - fuel filter	Option
E	HUSH-65649	1	Heater, engine - low rad hose	Option
--	HUSH-11930	1	Cable, battery - 19" 4ga blk- 3/8"	Option: Batt. disc. - Not Shown
--	HUSH-10386	1	Belt, cold weather - Mitsu 6KW & 8KW	Option: Not Shown

KUBOTA ENGINE ASSEMBLY

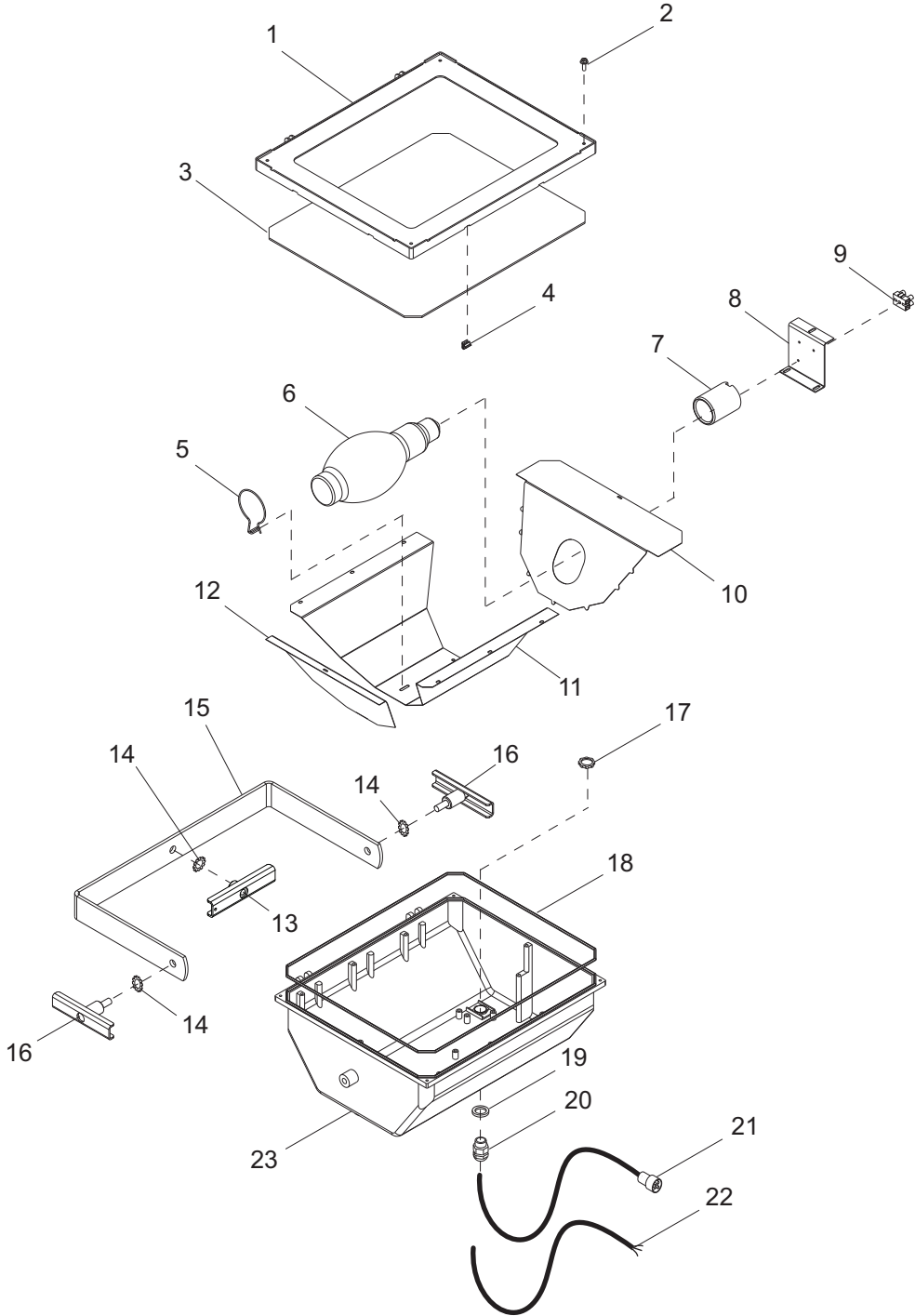


Note: Engine and generator parts used in all GODWING PUMPS OF AMERICA equipment carry the Original Equipment Manufacturer (OEM) warranty unless otherwise stated. OEM warranty parts must be purchased through an OEM dealer. Please contact GODWING PUMPS OF AMERICA with questions.

ITEM	PART	QTY	DESCRIPTION	NOTES
1	HUSH-13924	1	Radiator w/ fan guard	
2	HUSH-12338B	2	Weldment, engine mount	
3	HUSH-13310	1	Engine, Kubota D1005	GLT416 Start SN: 1003282
	HUSH-12286	1	Engine, Kubota D905	GLT416 End SN: 1003281
	HUSH-13281	1	Engine, Kubota D1105	GLT418
4	HUSH-16444	1	Element, air filter	
5	HUSH-13483B	1	Weldment, filter bracket	
6	HUSH-16687	1	Hose, radiator upper	
7	HUSH-12350	1	Hose, radiator lower	
8	HUSH-16589	1	Hose, air cleaner	
9	HUSH-16443	1	Filter, air with bracket	
10	HUSH-15241	2	Compression mount	
11	HUSH-11683B	2	Bracket, radiator	
12	HUSH-11413B	1	Fan Guard	
13	HUSH-15495	1	Kubota pusher fan	
14	HUSH-19219	1	Cap, pressure radiator 14 psi	
15	HUSH-13481	1	Kubota fuel filter assembly	
16	HUSH-13515	1	Fuel filter element	
17	HUSH-15021	1	Muffler, engine	
18	HUSH-13278	1	Kubota, fuel pump, electric	
19	HUSH-11628	1	Kubota V-belt	
20	HUSH-10775	1	Filter, oil	D1005 & D1105 Engines
	HUSH-15146	1	Filter, oil	D905 Engine
21	SEE NOTE	1	Cap, oil filler	
22	HUSH-11042	1	Gasket, exhaust manifold	
23	HUSH-16445	1	Bracket, air cleaner housing	
24	HUSH-12483	1	Dipstick, engine oil	
25	SEE NOTE	1	O-ring, oil cap	
26	HUSH-12486	1	Alternator	
27	HUSH-60649	2	Clamp, tubing - .750 heavy duty	
28	HUSH-41235B	2	Spacer - .75OD x .375ID x 1.00 long	
29	HUSH-13526	1	Kubota, joint eye, double port	
30	HUSH-15375	1	Switch, oil pressure	
31	HUSH-18106	1	Sensor, oil pressure	
32	HUSH-60735	1	Fitting, tee strt - .125NPT brs	
33	HUSH-14099	1	Switch, coolant temperature	
34	HUSH-12873	1	Sender, coolant temp - .375NPT	
35	HUSH-15074	1	Cable, battery red 38"	
36	HUSH-15073	1	Cable, battery black 24"	
37	SEE NOTE	1	Starter, engine	
38	SEE NOTE	1	Thermostat assy	
--	SEE NOTE	3	Glow plug, engine	Not shown
--	SEE NOTE	1	Kubota, water pump	Not shown
--	SEE NOTE	1	Kubota, water pump gasket	Not shown
--	HUSH-65996	1	Assy, engine harness	Not shown
A	HUSH-60774	1	Valve, drain 22MM-1.5 w/nipple	Option: oil drain
B	HUSH-12227	1	Hose, oil drain .375 x 20, 30R7	Option:oil drain
C	HUSH-60777	1	Clamp, hose - .312 fuel hose crimp style	Option: oil drain
D	HUSH-65649	1	Heater, engine - lower radiator hose	Option
--	HUSH-11930	1	Cable, battery - 19" 4ga blk 3/8"	Option: batt disc. - not shown

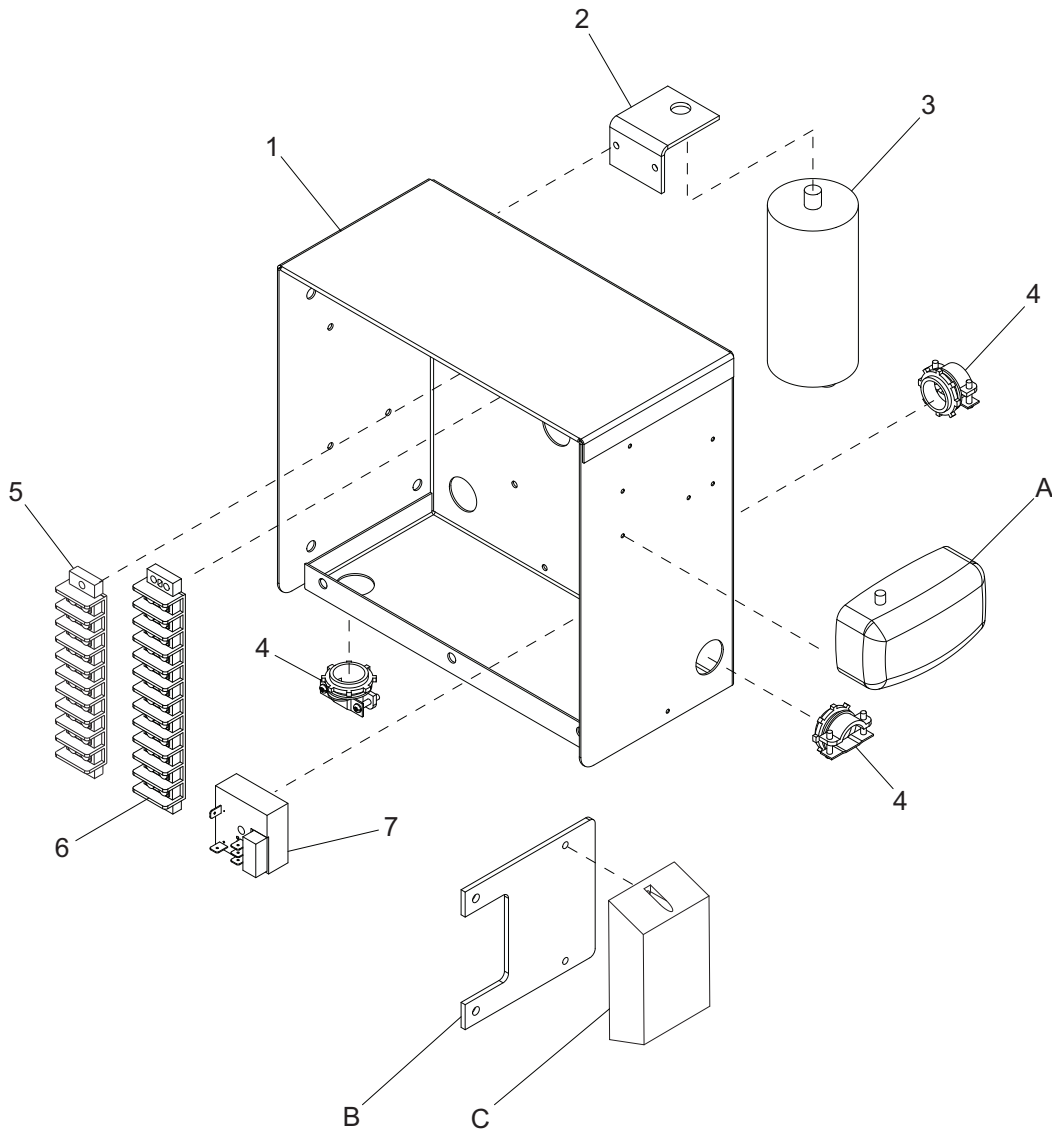
Note: Some Kubota engine parts are serial number specific. Please contact **Kubota Engine America Corp.** or the **GODWIN PUMPS OF AMERICA Technical Service Department** at 1-800-926-9768 for information regarding engine parts.

LIGHT ASSEMBLY



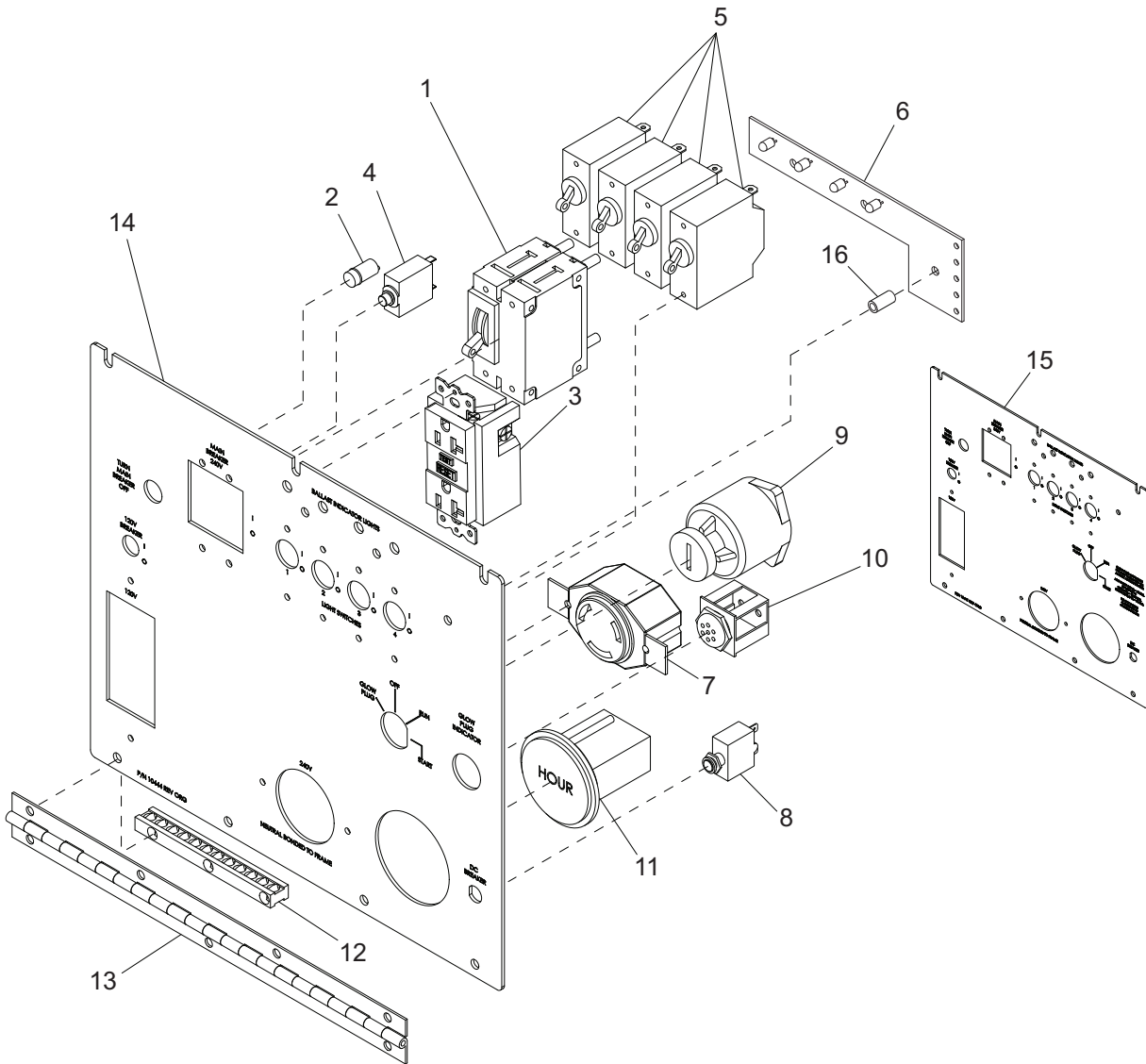
ITEM	PART	QTY	DESCRIPTION	NOTES
1	HUSH-11393	1	Cover, light	
2	HUSH-61059	4	Screw, 10-32X1 slot hex w/flange SS	
3	HUSH-11303	1	Lens, rectangular light	
4	HUSH-11392	8	Clip, glass light	
5	HUSH-11398	1	Support, bulb light	
6	HUSH-11391	1	Bulb - 1000W MH short length	
	HUSH-11465	1	Bulb - 1000W HPS short length	
7	HUSH-11394	1	Socket, light	
8	HUSH-11460	1	Bracket, light socket	
9	HUSH-65458	1	Block, terminal - 2 pos, 90A, 600V	
10	HUSH-11424	1	Reflector, end light	
11	HUSH-11399	1	Reflector, wrap around - light	
12	HUSH-11423	1	Reflector, hole in end - light	
13	HUSH-12993Z	1	Weldment, wing nut - light	
14	HUSH-60369	3	Washer, ext star lock M12	
15	HUSH-12991Z	1	Bracket, trunnion - light	
16	HUSH-12992Z	2	Weldment, wing bolt - light	
17	HUSH-15861	1	Nut, .500 NPT lock	
18	HUSH-11456	1	Gasket, lens	
19	HUSH-15697	1	Washer, rubber sealing - .500NPT	
20	HUSH-15864	1	Strain relief - .50NPT watertight	
21	HUSH-14166	1	Cord, 3 ft. w/quick disconnect plug	
22	HUSH-11457	1	Cable, light - hard wire	
23	HUSH-11400	1	Housing - light	
--	HUSH-65485	1	Kit, reflector 1000W	Items 10-12
--	HUSH-11402	1	Assy, light fixture	1000W MH non quick-disc.
--	HUSH-11790	1	Assy, light fixture	1000W HPS non quick-disc.
--	HUSH-12997	1	Assy, light fixture	1000W MH quick disc.
--	HUSH-11955	1	Assy, light fixture	1000W HPS quick disc.

CONTROL BOX ASSEMBLY



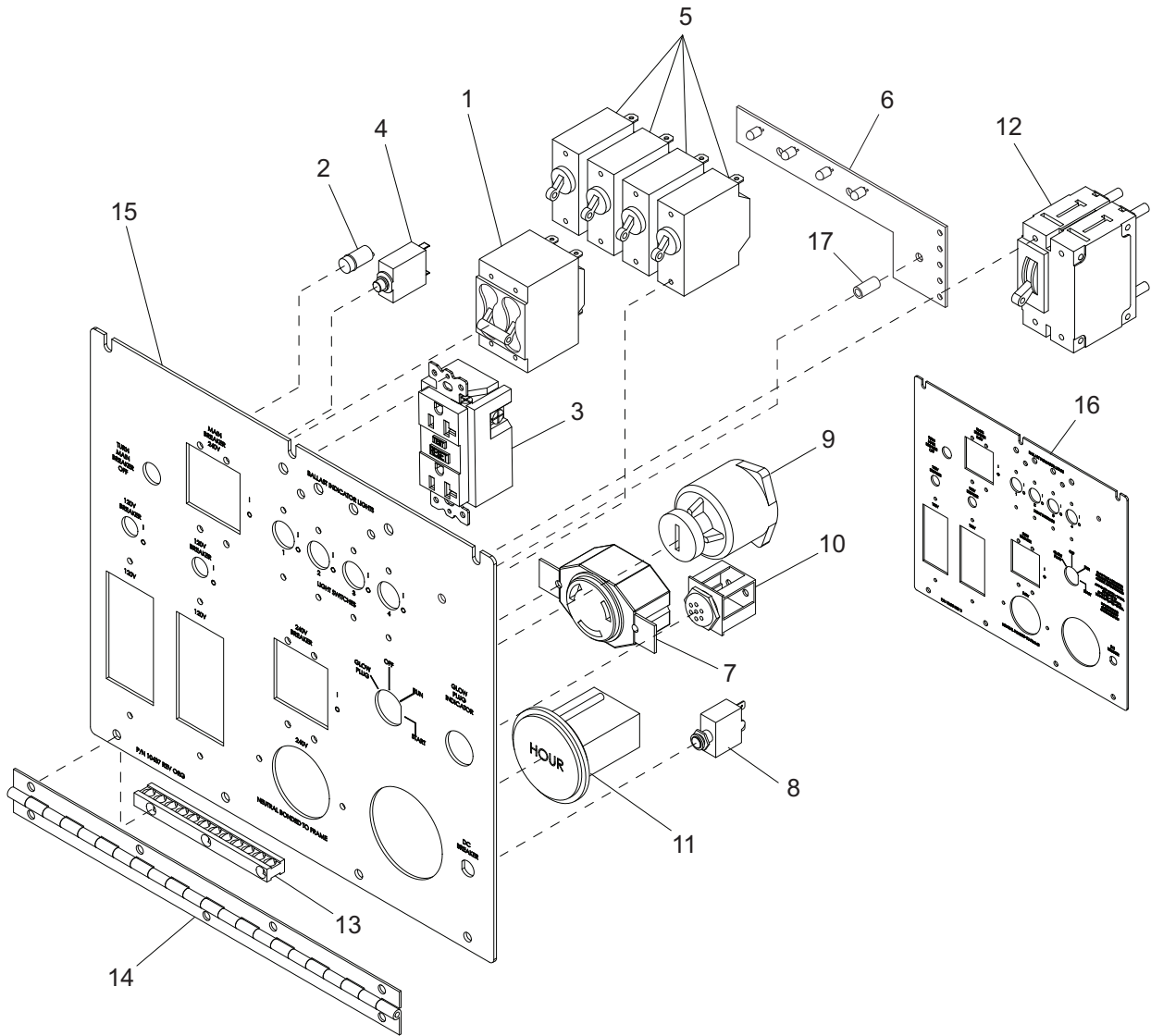
ITEM	PART	QTY	DESCRIPTION	NOTES
1	HUSH-13666B	1	Box, control	
2	HUSH-13690B	2	Bracket, capacitor	
3	HUSH-65959	2	Capacitor, dual 24uF sealed stud mount	
4	HUSH-14219	6	Strain relief- .75 romex w/ nut	
5	HUSH-14203	1	Block, terminal - 10 pos	
6	HUSH-14139	1	Block, terminal - 12 pos	
7	HUSH-14201	1	Relay, 10A spdt 12VDC time delay-15 sec	
A	HUSH-11947	1	Light, interior with switch	Option
B	HUSH-12429B	1	Bracket, battery charger - 2 amp, 3 stage	Option
C	HUSH-65326	1	Charger, battery - 2 amp, 3 stage	Option

CONTROL PANEL ASSEMBLY - GLT416



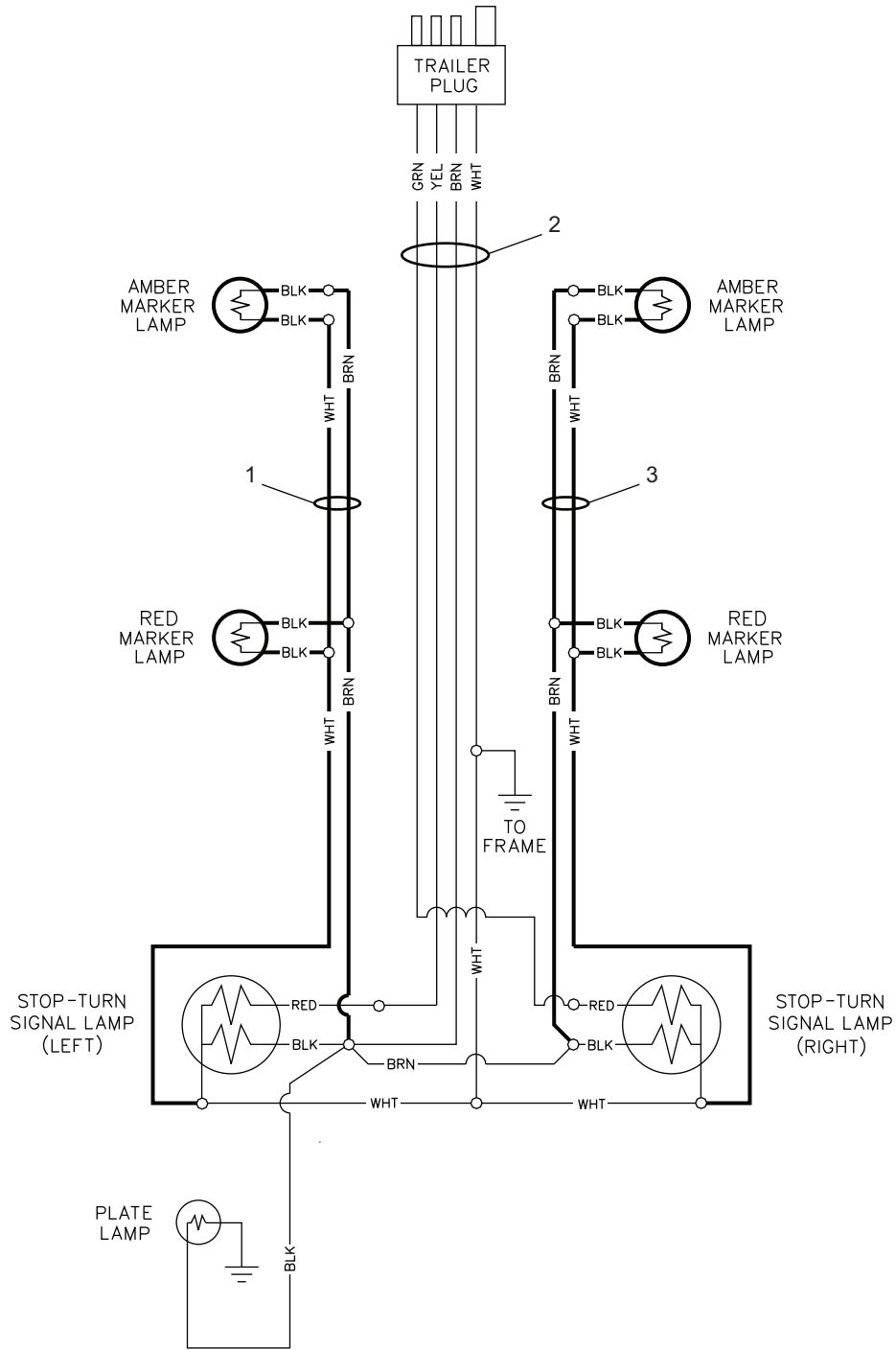
ITEM	PART	QTY	DESCRIPTION	NOTES
1	HUSH-65963	1	Breaker, 30A, 250V, 2 pole, stud term	
2	HUSH-65388	1	Light, indicator red - w/ wire 12V DC	
3	HUSH-14130	1	Receptacle, 120V/20A GFI (5-20R)	
4	HUSH-65849	1	Breaker, 20A, 120V, 1-pole, push button	
5	HUSH-14249	4	Breaker, 15A 250V 1 pole	
6	HUSH-66410	1	PCB, LED lights - expanded	
7	HUSH-14137	1	Receptacle, 240V/30A twist (L6-30R)	
8	HUSH-14841	1	Breaker, 10A, 240V, 1 pole push button	
9	HUSH-15195	1	Switch, key	
10	HUSH-16694	1	Indicator, glow plug	Mitsubishi only
11	HUSH-15085	1	Gauge, hourmeter	
12	HUSH-14204	1	Kit, ground bar	
13	HUSH-13677	1	Hinge, continuous - 11.00	
14	HUSH-10444	1	Panel, control	Mitsubishi only
15	HUSH-10441	1	Panel, control	Kubota only
16	HUSH-66257	3	Spacer, plastic, .2 ID .375 OD .25 thick	

CONTROL PANEL ASSEMBLY - GLT418



ITEM	PART	QTY	DESCRIPTION	NOTES
1	HUSH-65864	1	Breaker, 40A, 250V, 2 pole, screw term	
2	HUSH-65388	1	Light, indicator red - w/ wire 12V DC	
3	HUSH-14130	2	Receptacle, 120V/20A GFI (5-20R)	
4	HUSH-65849	2	Breaker, 20A, 120V, 1-pole, push button	
5	HUSH-14249	4	Breaker, 15A 250V 1 pole	
6	HUSH-66410	1	PCB, LED lights - expanded	
7	HUSH-14137	1	Receptacle, 240V/30A twist (L6-30R)	
8	HUSH-14841	1	Breaker, 10A, 240V, 1 pole push button	
9	HUSH-15195	1	Switch, key	
10	HUSH-65513	1	Glow indicator	Mitsubishih only
11	HUSH-15085	1	Gauge, hourmeter	
12	HUSH-65963	1	Breaker, 30A, 250V, 2 pole, stud term	
13	HUSH-14204	1	Kit, ground bar	
14	HUSH-13677	1	Hinge, continuous - 11.00	
15	HUSH-10437	1	Panel, control	Mitsubishi only
16	HUSH-13675	1	Panel, control	Kubota only
17	HUSH-66257	3	Spacer, plastic, .2 ID .375 OD .25 thick	

WIRING HARNESS ASSEMBLY



ITEM	PART	QTY	DESCRIPTION	NOTES
1	HUSH-10267	1	Harness, left side trailer	
2	HUSH-10262	1	Assy, trailer light harness	
3	HUSH-10266	1	Harness, right side trailer	
-	HUSH-65441	-	Adapter, pig-tail trailer light 4-pin to 12-pin	
-	HUSH-65465	-	Adapter, trailer wiring flat 4 to rnd 7 blade	
-	HUSH-65464	-	Adapter, trailer wiring flat 4 to rnd 7 pin	
-	HUSH-65463	-	Adapter, trailer wiring flat 4 to rnd 6 pin	
-	HUSH-65548	-	Adapter, 4 pin flat to 4 pin flat x 12.00	

REV: A
PART NO: HUSH-10715
01.20.10